

# DESIGNING AN ANGLO-MOROCCAN GARDEN

Boundary shared with neighbouring garden

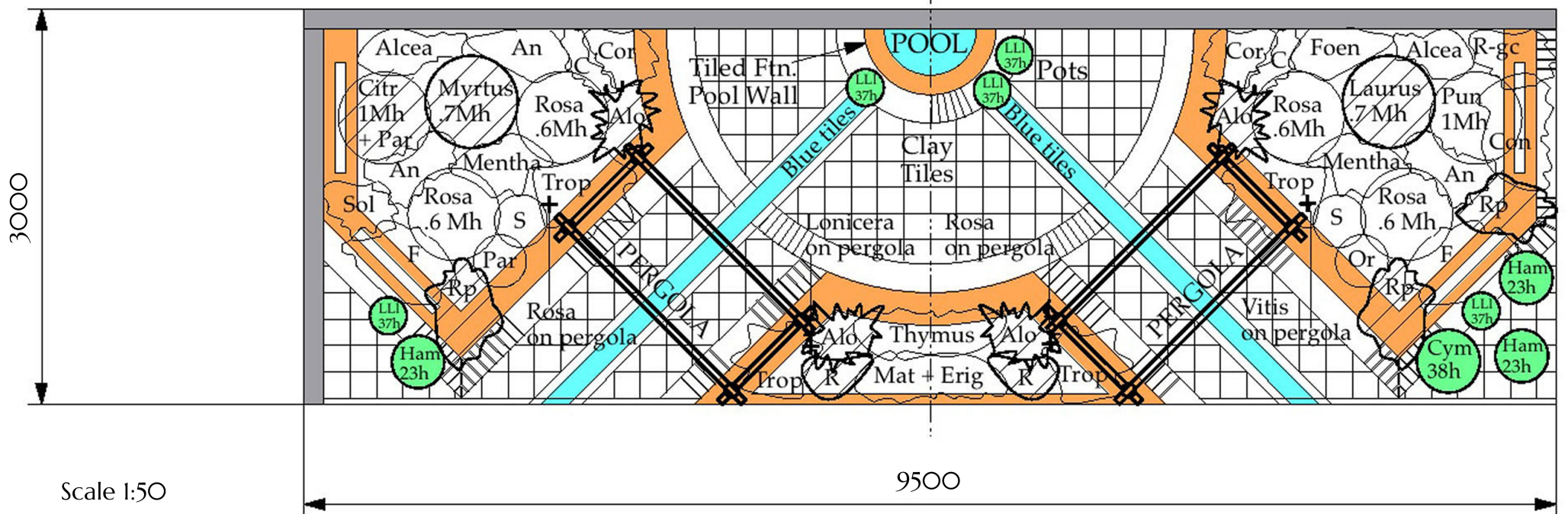
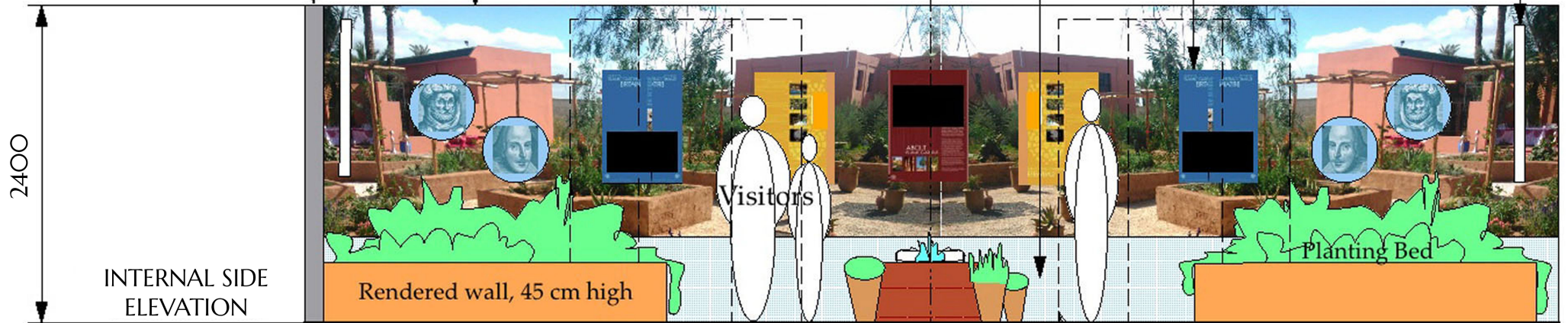
A panoramic image along the full length of the garden depicts a REEP garden project at Cadi Ayyad University, Marrakech. This image will form a perspective backdrop to the garden and offer a view of a case study garden project

Information panels, digital screens and portrait roundels for visual displays and brief-reinforcing images.

All dimensions are in mm, unless otherwise stated.

Continuous panels of acrylic 'mirror glass' (approx. 65cm high) will visually, subtly complete this garden's cruciform pattern, characteristic of Islamic and Elizabethan gardens.

'Floating' ironwork 'windows' (4 No. in total, AO-size)



- A = Annuals (possibly including *Antirrhinum majus* cv.)
- Alcea = *Alcea rosea*
- C = *Calendula officinalis* cv.
- Citr = *Citrus* sp. (in sunken pot to over winter as necessary)
- Con = *Convolvulus* sp.
- Cor = *Coriandrum sativum*
- Erig = *Erigeron karvinskianus*
- Foen = *Foeniculum vulgare*
- F = *Fragaria* sp.
- Lonicera on pergola = *Lonicera* sp.
- Laurus = *Laurus nobilis*
- Matthiola = *Matthiola incana*
- Mentha = *Mentha* sp.
- Myrtus = *Myrtus communis*
- Or = *Origanum vulgare*
- Punica = *Punica granatum* (in sunken pot to overwinter as necessary)
- R-gc = *Rosa* sp. (low/groundcover)
- R = *Rosmarinus officinalis*
- Rp = *Rosmarinus officinalis* Prostatus Group
- Rosa = *Rosa* sp. (shrub) - or other flowering shrub sp.
- Rosa on Pergola = *Rosa* sp. (climbing)

- Trop = *Tropaeolum majus* cv.
- S = *Salvia officinalis* cv.
- Sol = *Solanum lycopersicum* cv. (bush or trailing tomato)
- Thymus = *Thymus vulgaris*
- Vitis on pergola = *Vitis* sp..

#### Possible Extras:

- Allium* sp.
- Erigeron karvinskianus*
- Lilium* sp.
- Thymus* sp.

#### Possible Plants for Pots:

- Agave* sp.
- Aloysia citrodora*
- Bougainvillea* sp.
- Calendula officinalis* cv.
- Dianthus* sp.

© REEP 2014



REEP

THE RELIGIONS AND ENVIRONMENT EDUCATION PROGRAMME